



AQUA-WARM-W / AQUA-WARM-G / AQUA-WARM-P

4L Cordless Pet Warm Water Dispenser (UV)

4L 恆溫無線寵物飲水器(UV)



僅供家庭使用

For household use only

使用說明書

OPERATION MANUAL

在使用本產品前，請仔細閱讀此說明書，閱讀後小心保存，以備日後查閱。

Please read the operation manual carefully before using and well keep it in a safe place for future reference.


本說明書中的圖示可能與實物有不同的地方，僅供參考。

Some figures in the manual may not match with the real object, just for reference only.

1. 安全注意事項

使用本產品時，必須遵守下列安全預防措施：

1. **警告：**請僅使用符合以下規格的外部電源：直流 12 伏特 = 2 安培。
2. **警告：**本產品包含不可更換電池，須使用配套的電源適配器。
3. **警告：**電池充電時，僅使用本產品隨附的電源適配器。
4. 電池充電的正常溫度範圍為 0-40°C。
5. 本產品內置電池類型為可充電鋰離子電池，只能由專業維修人員更換，不可自行拆除或更換電池。如需將電池安全棄置，可將電池交予有指定認可棄置電池的地方。
6. 如電池出現受損、漏液，需帶上手套再使用絕緣膠帶封住電池正負極端子，放入防火容器或塑膠袋中密封，運送至指定認可棄置電池的地方或專業危險廢物處理設施。
7. **警告：**金屬物體可能導致電池供電設備或電池的端子短路。
8. 使用前將所有包裝物料全部取出並棄掉，以免兒童或寵物當作玩具造成危險。
9. 對於由可拆卸電源裝置供電的 III 類結構部件，說明書指出本產品只能與所提供的裝置一起使用。
10. 切勿使用有殘缺或鬆動的適配器。使用前確保持電線及適配器已充分抹乾，及使用時須插穩。
11. 切勿在充電線、適配器及產品上放重物或讓其接觸灼熱的表面；切勿夾住、改裝、用力拉扯或扭曲充電線、適配器及本產品。
12. 切勿在充電線纏結的情況下連接電源。

13. 切勿將充電線及適配器浸入水中，或被水濺濕，以免造成觸電的危險。
14. 切勿用水清洗加熱底座，防止內部電子元器件損壞。
15. 手濕時切勿安裝配件、接觸、插入或拆除充電線及適配器，否則可構成觸電的危險。
16. 切勿將手指放入產品的縫隙中，以免造成傷害。
17. 在插入或拔除適配器時，應用手握穩適配器，切勿抓住充電線。
18.  此產品需要一個特定的獨立電源單元將本產品連接到電源，外部電源型號為 HR024W-120200B，規格為直流 12 伏特 = 2 安培。
19. 切勿讓小孩在沒有監督下使用、清潔及維修保養本產品或玩耍器具。必須將本產品、適配器及充電線其放於小孩不能接觸的地方。
20. 產品只能在室內使用。切勿在陽光直射的環境中使用。
21. 切勿將本產品或電池暴露於過高溫度下。
22. 為避免危險，使用時必須遠離以下地方：
 - 易燃物、噴霧劑及煙劑等周圍
 - 熱源（如散熱器）或火源等周圍
 - 近水的環境
 - 大量熱氣、蒸氣或潮濕的地方
23. 本產品不可供兒童及體質、感覺或智力有障礙人士或缺乏經驗和相關知識的人士使用，除非他們曾經接受負責安全人士的監督或指導。
24. 切勿在 0°C 以下、40°C 以上的環境使用本產品。
25. 六個月及 1.5 公斤以下的寵物不能使用此設備。
26. 應按寵物類型、年齡、行為或飲水習慣等使用本產品。

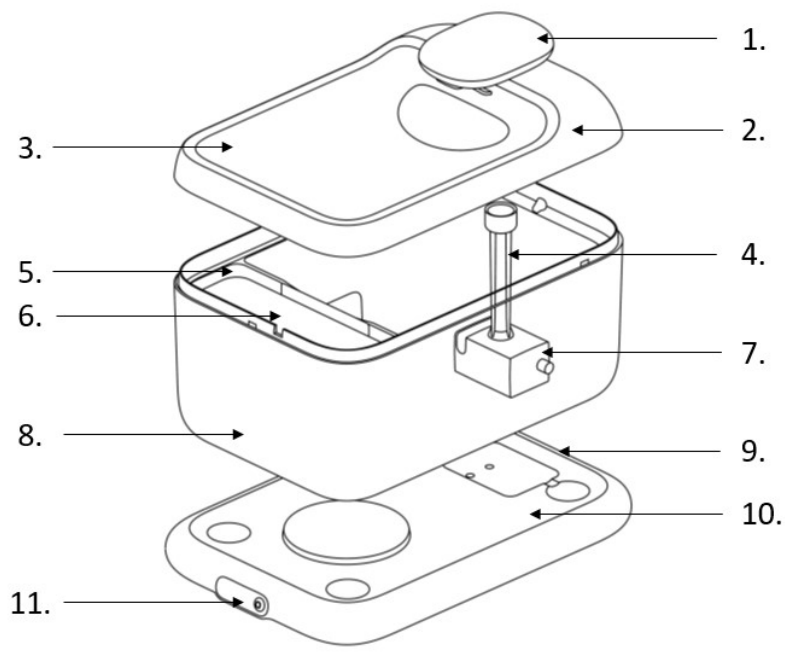
27. 如需長時間外出，應確保水箱有足夠水量。
28. 為防止危險，小心蓋住或隱藏充電線，以防寵物咬到充電線造成觸電。
29. 經常檢查本產品、充電線及適配器。為避免危險，如有損壞應立即停止使用，並聯絡信興電器服務中心有限公司進行檢查及維修。
30. 此產品為雙重絕緣設計，切勿擅自改裝此產品或使用非生產商提供的零件進行修理，否則可造成危險及維修保養將會無效。
31. 在清潔、移動、安裝本產品或拆卸配件前，確保充電線及適配器已從插座拔掉並確保電源已關閉。
32. 切勿強行撬開、拆除水泵內的 UV 燈罩。
33. 保持產品水平放置，切勿傾倒或翻轉，避免運作異常。
34. 為防止寵物撲倒產品，建議放置本產品於角落或靠牆位置。切勿讓產品受潮。
35. 切勿靠座或站立在本產品上。
36. 產品經出廠測試，部件上有少許水漬屬正常現象。

2. 產品規格

型號	AQUA-WARM-W	AQUA-WARM-G	AQUA-WARM-P
顏色	白色	灰色	粉紅色
額定功率	24 瓦		
輸入電壓/ 電流	直流 12 伏特 = 2 安培		
電池類型	鋰離子電池		
額定電池容量	6,000 毫安時		
充電時間 (約)	8 - 10 小時		
額定容量 (約)	4.0 升 (最高水位線)		
產品尺寸 (闊 x 深 x 高) (約)	200 x 299 x 212 毫米		
淨重 (約)	1.7 公斤 (包括所有配件)		

3. 產品結構

3.1 產品說明



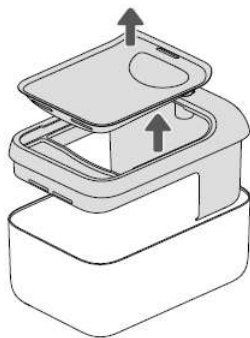
1. 出水口	2. 主機上蓋
3. 不銹鋼水盤	4. 出水管
5. 水箱濾芯托盤	6. 水箱濾芯
7. UVC 水泵	8. 水箱
9. 加熱鍵及電源接口	10. 加熱底座
11. 電源開關/模式切換鍵及底座	

(以上產品圖僅供參考，以實物為準)

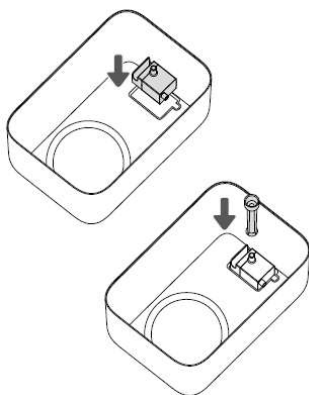
4. 保養、清潔及儲存

備註：建議用戶定期清潔本產品，否則灰塵及殘渣過度積聚，有可能危害寵物健康。

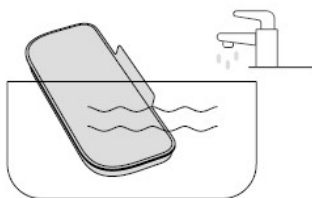
4.1 產品的組裝 / 拆除



1. 依照上圖所示，提出不銹鋼水盤及主機上蓋。

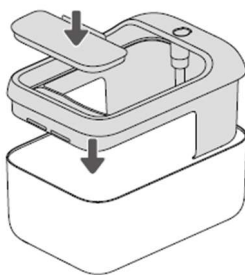


2. 按上圖安裝UVC水泵及出水管。

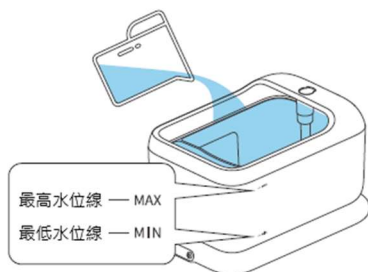


3. 使用前需將濾芯用清水沖洗後再浸泡兩分鐘，以去除活性炭在運輸過程中因碰撞產生的浮炭。

備注：水箱濾芯需定時更換，建議每月更換一次。
適用於本產品的濾芯型號為AQUA-WARM-CF。



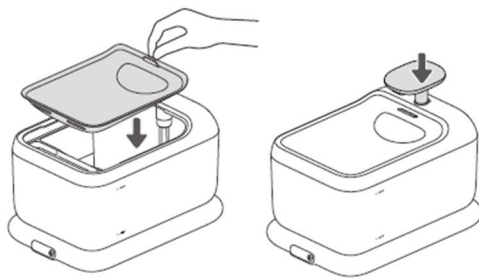
4. 依方向安裝上蓋組件及濾芯。



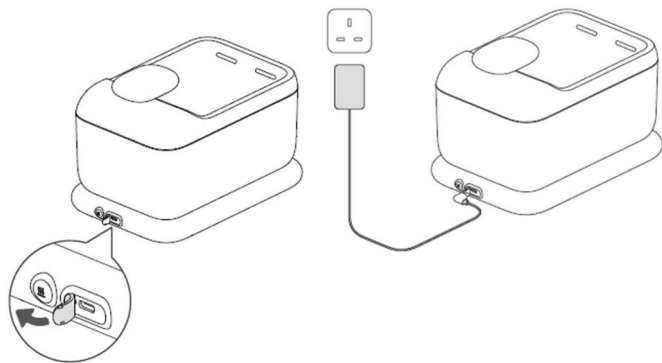
5. 把主機放上加熱底座，再將飲用水倒入水箱內。

注意！切勿倒入飲用水外的液體。

注意！需加水到最低水位線，水泵才會正常運作。切勿加水超過最高水位線。



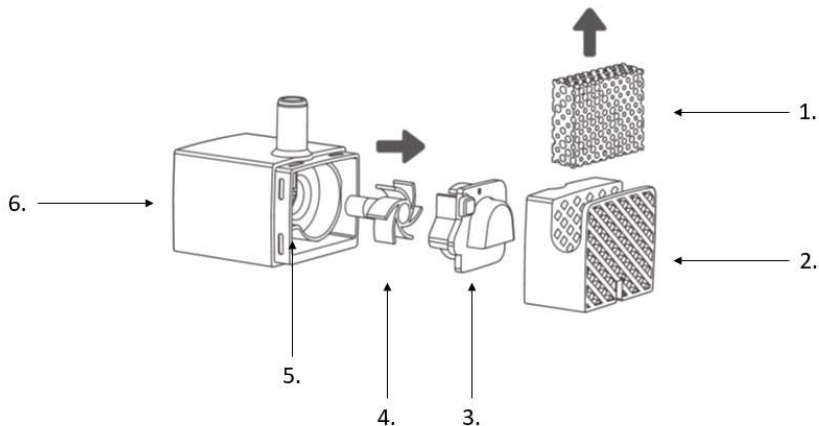
6. 提住水盤提手向下安裝水盤，再向下安裝出水口。



7. 取出電源適配器，將適配器連接至加熱底座背面的電源接口，再將適配器插頭接入插座，接通電源。有關使用方法可參考：章節5.3 運作說明。

備注：如沒有連接電源線，確保膠塞完全塞在凹槽內。

4.2 水泵的組裝 / 拆除



1. 過濾綿	2. 泵蓋
3. 葉輪蓋	4. 葉輪
5. UVC 燈	6. 主體

1. 依圖所示，順序拆下/組裝過濾綿、泵蓋、葉輪蓋、葉輪。

備注：水泵過濾綿建議每一個月更換一次。

備注：需要用鑷子取出水泵內的葉輪，本產品並沒有附送鑷子，用戶須自行準備。

2. 清潔水泵時，可用水沖洗及清潔刷沖刷水泵配件。清潔完成後，只需依圖所示組裝。

備註：泵蓋部分位置會因 UVC 燈長期照射而變黃，此乃正常現象，用戶可繼續使用。

注意！清潔水泵後必須裝回泵蓋，並避免眼睛和皮膚直接暴露在運作中的 UVC 燈，以免受到傷害。

4.3 清潔水箱及與飲用水接觸的配件

備注：建議先清除水箱內的飲用水，再進行水箱及配件的清潔及保養。

1. 清潔前，必須確保產品已關閉，並清空水箱和拆卸配件。
2. 可用軟布清潔加熱底座，切勿用水沖洗。
3. 可用清水或少量溫和清潔劑清洗配件。
4. 切勿用天拿水、汽油、去污粉、硬質刷及金屬刷來清潔配件，以免刮花或腐蝕配件表面，致產生異味或滋生細菌。
5. 切勿使用有毒或含腐蝕性清潔劑進行清潔。

4.4 儲存

1. 如長期不使用本產品，需清空水箱內剩餘的飲用水，及取出水泵。
2. 於清潔後充分乾燥，然後套上塑膠袋，藏於乾爽及避免紫外光直接照射的環境。

5. 使用方法

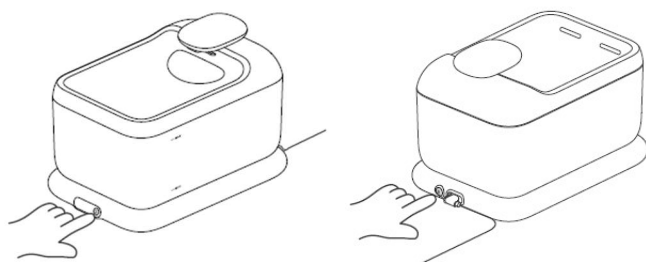
5.1 首次使用前

1. 先將本產品的包裝物料全部清除。如本產品的外殼上附有包裝袋，應將包裝袋除去後才使用。切勿讓小孩或寵物玩弄包裝袋，否則可能會引致窒息及危險。
2. 徹底檢查本產品及配件有否損壞及裂痕。如有損壞，切勿組裝或使用本產品。
3. 首次使用前，可用清水沖洗水泵。而其他與飲用水接觸的配件則可用少量中性清潔劑清洗。


5.2 使用前準備

1. 使用前，建議放置本產品於角落或靠牆位置，及放置於水平穩固、乾爽、抗熱及防水的表面上，以免發生意外。
2. 運作前，須確保妥善安裝水箱及配件。安裝詳情可參考章節 4.1 產品的組裝 / 拆除及章節 4.2 水泵的組裝 / 拆除。

5.3 運作說明



按  **【電源開關/模式切換】** 鍵 2 秒，產品會發出“呖”聲，然後產品進入智能感應模式，開始運作。

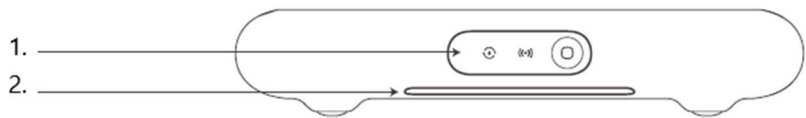
按  **【加熱】** 鍵 2 秒，產品會發出“呖”聲，底座的顯示燈會長亮暖白光，表示產品已開啟恆溫加熱功能。

注意！ 恆溫加熱功能需連接電源插頭下使用，水溫會因外部環境、天氣溫度、水量等影響。

本產品備有三種出水模式，分別為智能感應模式、間歇模式和持續模式。

若要切換運作模式，按一下**【電源開關/模式切換】** 鍵，產品會發出“呖”聲，對應模式的指示燈亮起。

詳細描述見下方：



1. 出水指示燈 2. 底座提示燈(紅/暖白色)

智能感應模式 (●) 燈長亮	<ul style="list-style-type: none">● 當寵物進入感應區〔即距離產品約前方 120 度，40 - 80 厘米半徑範圍〕，產品會自動運作開始出水。● 每次出水時間約為 25 秒。● 若使用時間超過 25 秒，產品會自動改為持續出水，直到寵物離開感應區，便會停止運作。
間歇模式 (●) 燈閃爍	<ul style="list-style-type: none">● 每隔約 30 分鐘出水一次。● 每次出水時間約為 25 秒。 <p>*間歇模式只會在電池供電下選擇。</p>
持續模式 (●) 燈長亮	<ul style="list-style-type: none">● 產品會持續出水。 <p>*持續模式只會在連接電源適配器下選擇。</p>

底座提示燈描述見下：

紅色閃爍	電池電量不足，需儘快充電。
紅色長亮	水箱水量不足，需儘快加水。
暖白色閃爍	電池充電中，產品可正常使用。
暖白色熄滅	充電完成。
暖白色長亮	已開啟恆溫加熱功能。

按【加熱】鍵 2 秒，產品發出“呖”聲，表示已關閉恆溫加熱功能，再按【電源開關/模式切換】鍵 2 秒，產品發出“呖”聲，表示產品已關機。

6. 充電方法

備註：首次使用，或者長時間不使用時，必須確保產品已完成充電。

1. 須使用原裝的電源適配器。
2. 連接電源，暖白光指示燈會閃動，表示產品正充電中；當充電完成後，暖白光指示燈會熄滅。

注意！若長時間不使用本產品，須確保每三個月進行一次充電，以防止電池老化。

注意！為免使用過程中寵物咬到充電線造成觸電，須小心蓋住或隱藏充電線。

7. 故障排除

故障現象	原因	解決方法
產品不能運作。	檢查是否已開啓電源開關。	長按【電源開關/模式切換】鍵啓動產品。
	檢查產品是否電量過低。	將產品重新充電後，稍後再啓動產品。
產品沒有水供應。	檢查是否水箱水量不足。	加食用水至水箱最高水位線。
產品出水量低。	檢查水泵過濾綿或水箱濾芯是否有異物堵塞。	清潔/更換水泵濾網/水箱濾芯。

水質渾濁或變黃。	檢查是否長時間沒有更換飲用水。	立即更換飲用水。建議每 7 日更換飲用水一次。
	檢查是否長時間沒有更換水箱濾芯。	立即更換水箱濾芯。建議每一個月更換水箱濾芯及過濾綿一次。

*如使用以上方法仍未能使產品恢復正常操作，切勿嘗試自行維修。應聯絡信興電器服務中心有限公司進行檢查及維修。

8. 特別聲明

1. 本資料上所有內容經過核對，如有任何印刷及內容上的誤解，本公司將保留解釋權。
2. 本產品若有技術改進，會編進新版說明書中，恕不另行通知；產品外觀及規格以廠方生產資料為準。
3. 使用說明書的電子副本可以通過電子郵件發送致客戶，如有需要，可致電信興電工工程有限公司：2861 2767。

9. 售後服務

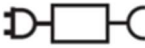
信興電工工程有限公司授權信興電器服務中心有限公司（“服務中心”）提供一年保修服務並由發票/換購收據上的日期起計。服務中心保留所有更改保修條款的權利，恕不另行通知，有關保修條款詳情，可參閱本公司網站。

1. Important Safeguards

When using the appliance, please follow below safety precautions:

1. **WARNING:** Please use only an external power supply that meets the following specifications: DC 12V = 2A °
2. **WARNING:** The appliance contains batteries that are non-replaceable. Use the provided power adapter to connect with the appliance.
3. **WARNING:** For the purpose of recharging the battery, only use the supply unit provided with this appliance.
4. The normal charging temperature range for the battery is 0-40°C.
5. This appliance has a built-in rechargeable lithium-ion battery, which can only be contains batteries that are only replaceable by skilled persons. Do not attempt to remove or replace the battery. For safe disposal of the battery, please take it to a designated, approved battery disposal facility.
6. If the battery is damaged or leaks, wear gloves and seal the positive terminal of the battery with insulating tape. Place it in a fireproof container or plastic bag and seal it. Transport it to a designated and approved battery disposal facility or a professional hazardous disposal facility.

7. **WARNING:** Be aware of the risk of terminals of the battery-operated appliance or battery being short circuited by metal objects.
8. Remove and discard all packing materials of the appliance. Make sure children and pet do not play with them to avoid any danger.
9. For a part of class III construction supplied from a detachable power supply unit, the instructions state that the appliance is only to be used with the unit provided.
10. Never use deficient or loosen adapter. Make sure the charging cable and adapter are dry before use and inserted firmly when use.
11. Do not put heavy objects on the charging cable, adapter and appliance or let it touch any hot surface. Never clip, modify, stretch or twist the charging cable, adapter and appliance.
12. Do not use the charging cable when it is tangle.
13. Never immerse the charging cable and adapter into water or let them wet, it is to avoid electric shock.
14. Do not rinse the heating base directly with water to prevent damage to internal electronic components.
15. To avoid electric shock, never assemble accessories, touch, plug in or unplug charging cable and adapter with wet hands.
16. Do not insert fingers into any gaps in the appliance to avoid injury.

17. Always hold the adapter tightly with hands when insert or remove it. Do not grasp charging cable.
18.  A specific separated power supply unit is required to connect this appliance to power supply. The external power supply model is HR024W-120200B, and the specification is DC 12V = 2A.
19. Children being supervised not to play with the appliance. Using, cleaning and maintenance shall not be made by children without supervision. Put the appliance, charging cable and adapter in a place not reachable by children.
20. The appliance is intended for in door use. Do not use the appliance in an environment exposed to direct sunlight.
21. Do not expose the appliance or battery to excessive temperatures.
22. To avoid danger, never use the appliance near the environment of:
- Flammable materials, sprays and aerosols, etc.
 - Heat source (e.g. radiator), fire etc.
 - Near water
 - Massive hot air, steam or humid area.
23. The appliance is not to be used by persons (including children) with reduced physical, sensory or mental capabilities, or lack of experience and knowledge, unless they have been given supervision or instruction.
24. Do not use the appliance in environments below 0°C or above 40°C.

25. The appliance cannot be used on pets under six months old and weighting less than 1.5kg.
26. Set the appliance according to the breeds, age, behavior or drinking habits of your pet.
27. If need to be away for a long time, ensure the appliance has sufficient water supply.
28. To prevent danger, carefully cover or hide the charging cable to prevent pets from chewing on it and causing electric shock.
29. Always check the condition of the appliance, charging cable and adapter. To avoid hazards, stop using immediately if any damage is found. Contact Shun Hing Electric Service Centre Limited for checking and repairing.
30. This appliance is double-insulated, do not attempt to modify the appliance by yourself or repair with any parts that are unauthorized, otherwise it may cause hazards and warranty becomes invalid.
31. Before cleaning, moving, installing this appliance, or removing accessories, make sure the charging cable and adapter are unplugged from the socket and the power is turned off.
32. Do not open or remove the UV lamp cover inside the water pump by force.
33. Keep the product leveled, do not tile or flop it to prevent causing malfunctions or inability to operate.

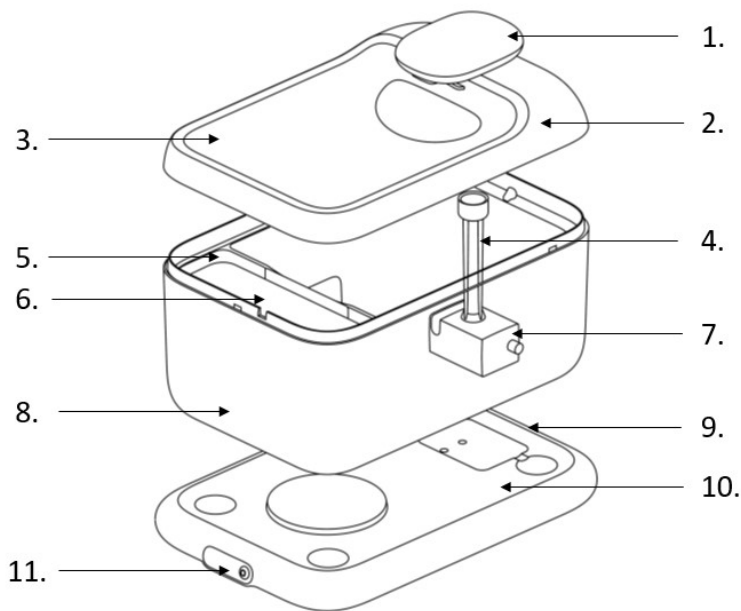
34. To prevent pets from knocking over the appliance, it is recommended to place it in corners or against walls. Do not let the appliance get wet.
35. Do not sit or stand on this appliance.
36. This appliance has been tested at the factory, so it is normal if there are few water stains.

2. Product Specifications

Model no.	AQUA-WARM-W	AQUA-WARM-G	AQUA-WARM-P
Color	White	Grey	Pink
Rated Power	24W		
Input Voltage / Current	DC 12V = 2A		
Type of Battery	Lithium-ion rechargeable battery		
Rated Rechargeable Battery Capacity	6,000 mAh		
Charging Time (Approx.)	8 - 10 hours		
Rated Capacity (Approx.)	4.0 L (MAX. water level)		
Product Size (WxDxH) (Approx.)	200 x 299 x 212 mm		
Net Weight (Approx.)	1.7kg (Including accessories)		

3. Product Descriptions

3.1 Product description



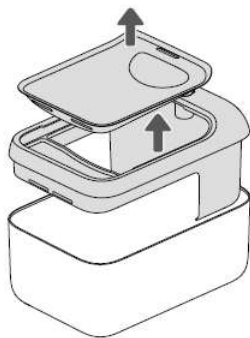
1. Water Outlet	2. Top Cover
3. Stainless Steel Drinking Tray	4. Outlet Pipe
5. Filter Tray	6. Filter
7. UVC Water Pump	8. Water Tank
9. Heating Key and Power Port	10. Heating Base
11. Power/Mode Key and Base Indicator	

(Above product diagram is for reference only, appearance refers to actual product.)

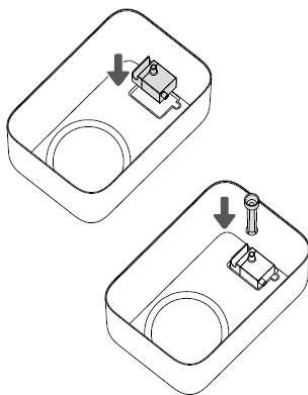
4. Maintenance, Cleaning and Storage

NOTE: It is recommended to clean the appliance regularly, as excessive accumulation of dust and residue could potentially harm the health of pets.

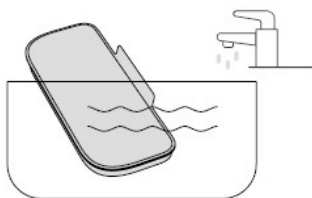
4.1 Assembly / Disassembly accessories



1. Remove the stainless steel drinking tray and the top cover part of the main unit in sequence.



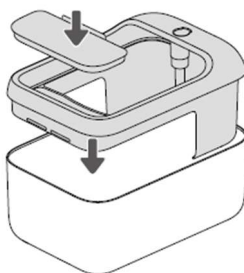
2. Install the UVC water pump and outlet pipe in the direction.



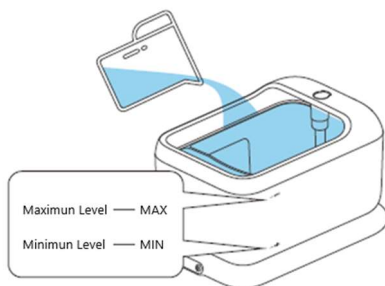
3. Before use, rinse the filter with clean water and soak it for 2 minutes to remove any floating carbon caused during transportation.

NOTE: Filter core must be replaced regularly and suggested to replace it every month.

The suitable filter model is **AQUA-WARM-CF**



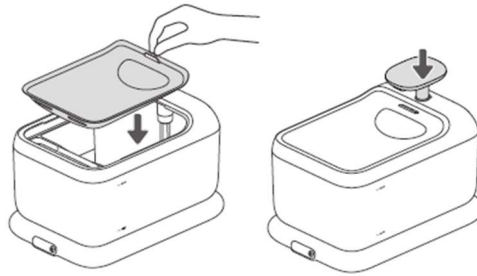
4. Install the main unit's top cover and filter.



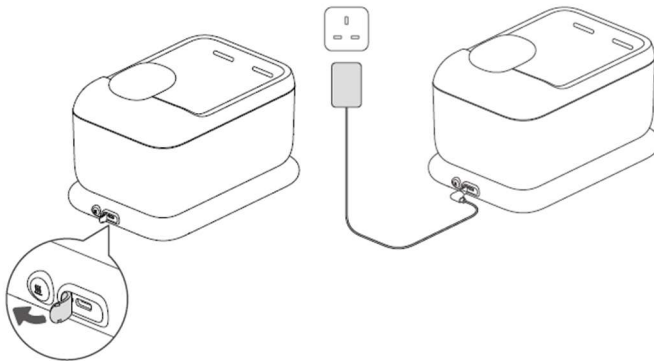
5. Place the main unit on the heating base and fill an appropriate amount of drinking water.

CAUTION: Do not fill any liquid other than drinking water.

CAUTION: The pump will function properly only if the water level reaches the minimum level. Never fill water above the maximum level.



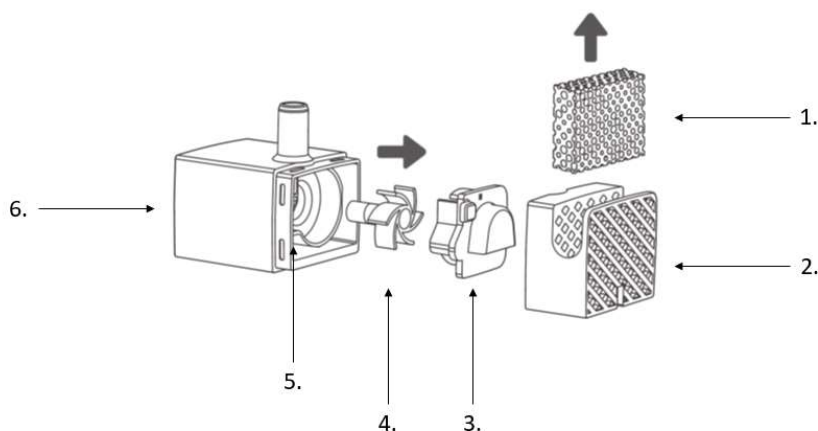
6. Hold the handle of the water tray and install water tray downwards, then install the water outlet.



7. Take out the power adapter, connect it to the power port, then plug it into socket to power the device. For working instructions, refer to **Chapter 5.3 Operation Instructions**.

NOTE: If the power cord is not connected, ensure the rubber plug is completely inserted into the groove.

4.2 Assembly / Disassembly water pump



1. Water Pump Filter	2. Water Pump Cap
3. Impeller Cover	4. Impeller
5. UVC Light	6. Main Body

1. Sequential assembly/disassembly the water pump filter, water pump cap, impeller cover and impeller.

NOTE: Water pump filter must be replaced regularly and suggested to replace it every month.

NOTE: There is NO tweezer supplied with appliance, user should prepare for it.

2. To clean the water pump. Rinse it with water and a cleaning brush to flush the pump accessories. After cleaning, assemble it as show in the diagram.

NOTE: Parts of the water pump cap may turn yellow due to long-term exposure to UVC light. This is normal and user can continue to use.

CAUTION! Make sure to reinstall the water pump cap after cleaning the water pump, and avoid direct exposure of eyes and skin to the UVC light during operation to prevent damage.

4.3 Cleaning water tank and water contact accessories

Note: It is recommended to empty the drinking water in the water tank before cleaning and maintaining the appliance.

1. Before cleaning, make sure the appliance is powered off, empty the water tank and all accessories removed.
2. The heated base can be cleaned with a soft cloth. **DO NOT** rinse it by water.
3. Clean all the accessories with water and a small amount of mild detergent.
4. To avoid scratching and corroding the surface of the parts, do not use lacquer thinner, gasoline, decontamination powder, hard brush or metal brush to clean the accessories, resulting in odor or breeding of bacteria.
5. Do not use toxic or corrosive cleaning agents.

4.4 Storage

1. If the appliance is not in use for a long time, empty the water tank, take out the water pump.
2. Put it in a plastic bag after cleaning and dried, and store it in a dry place and avoid direct ultraviolet light.

5. Operation Instructions

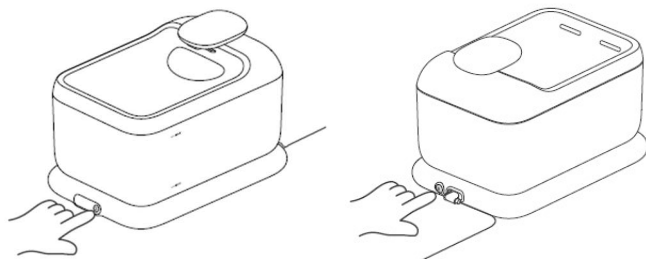
5.1 Before First Use


1. Remove all packaging materials from the appliance. If there is a packaging bag attached to the enclosure of the appliance, remove it before use. Do not let children or pets play with the packaging bag, as it may cause suffocation and danger.
2. Thoroughly check the appliance and accessories for any damage or cracks. Do not assembly or use the appliance if there is any damage.
3. Before the first time of use, clean the surface of the water pump with a damp cloth. Other water contact accessories can be cleaned by neutral detergent.


5.2 Before use

1. Before use, it is recommended to place the appliance in a corner or against a wall. Place it on a stable, dry, heat-resistant, and waterproof surface to prevent accidents.
2. Before operation, assembly the water tank and all accessories properly. Details refer to **Chapter 4.1 Assembly / Disassembly accessories** and **Chapter 4.2 Assembly / Disassembly water pump**

5.3 Operation instructions



Press  **【Power/Mode】 Key** 2 seconds, the appliance will have a “Bi” sound, indicating the appliance is running under sensor mode.

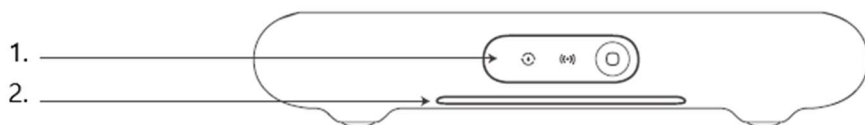
Press  **【Heating】 Key** 2 seconds, the appliance will have a “Bi” sound, the warm white base indicator light will light on and indicating the appliance is running under heating function.

CAUTION! The heating function requires to connect to power adapter, water temperature may be affected by external factors such as the environment, weather conditions, and water volume.

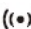


There are 3 different operation modes which are sensor mode, interval mode and continuous mode.

To change the operation mode, press **【Power/Mode】 Key**, the appliance will have a “Bi” sound, while the following mode indicator flash once.

Details of the operation can be found in below:



1. Water Indicator Light 2. Base Indicator Light(Red/Warm White)

Sensor Mode  Light Stay on	<ul style="list-style-type: none"> ● When the pet enters the detection area (which is approx. 40-80cm radius range and 120° areas), the operation will start automatically. ● Water dispense for every 25 seconds each time. ● If operation time longer than 25 seconds, the operation will run continuously until the pet leave the detection area.
Interval Mode  Light Flash	<ul style="list-style-type: none"> ● With schedule specified, the appliance will operate in each 30 minutes. ● Water dispense for every 25 seconds each time. <p>*Interval mode is only selected when operating on battery.</p>
Continuous Mode  Light Stay on	<ul style="list-style-type: none"> ● The product will continue to discharge water. <p>* Continuous mode is only selected when operating on power adapter.</p>

Details of the base indicator light can be found in below:

Red Light Flash	Low battery, charge the appliance promptly.
Red Light Stay On	Water shortage, fill drinking water promptly.

Warm White Light Flash	Charging battery, can be used normally.
Warm White Light Off	Charging complete.
Warm White Light Stay On	Heating function on.

Press **【Heating】 Key** 2 seconds, the appliance will have a “Bi” sound, the heating function is off. Press **【Power/Mode】 Key** 2 seconds, the appliance will have a “Bi” sound, appliance is off.

6. Charging

Note: Be sure to fully charge the battery before first time of use or when not in use for a long time.

1. Use the original power adapter.
2. When the appliance connected to the electricity, the warm white base indicator light will flash to indicate that the appliance is charging; when charging is complete, the light will turn off.

CAUTION! If the appliance is not in use for a long time, charge it every 3 months to prevent battery aging.

CAUTION! To prevent pets from biting the charging cable resulting electric shock, be careful to cover or hide the power cable.

7. Troubleshooting

Problem	Reason	Solution
The appliance does not work.	Check if the power is turned on.	Press and hold the 【Power / Mode】 key to turn on the appliance.
	Check if the power level is low.	Recharge the appliance and restart the operation.
No water dispense.	Check if water tank is in lack of water.	Fill water into water tank to MAX. level.
Less water dispense during operation.	Check if the filter core or water pump filter has been clogged.	Clean/ replace the filter core or water pump filter.
Water is turbid or became yellow.	Check if the drinking water is not replaced for a long time.	Change the drinking water immediately. Make sure to change it every week.
	Check if the filter core is not changed for a long time.	Replace the filter core immediately. Make sure to replace the filter core every month.

If the above solutions cannot fix the problem, do not attempt to modify the appliance by yourself and contact Shun Hing Electric Service Centre Ltd. to check and repair.

8. Special Avowal

1. The information above has been checked; our company reserves the hermeneutic power to any print errors or misunderstanding on the content.
2. Please note that any technology improvement will be added to the new versions of operation manual without any prior notices. The product appearance and specification are subject to the actual appliance.
3. E-copy of operation manual can be sent by e-mail on request, please call Shun Hing Electric Works and Engineering Co., Ltd at 2861 2767.

9. After Sales Service

Shun Hing Electric Works & Engineering Co., Ltd. authorizes Shun Hing Electric Service Centre Ltd. (“SHESC”) to offer one year warranty service to the product commencing from the date of purchase invoice or redemption voucher. SHESC reserves the right to change the warranty terms without prior notice. For details of the warranty terms, you can refer to our website.



信興電工工程有限公司

SHUN HING ELECTRIC WORKS AND ENGINEERING CO., LTD.

辦公室：香港九龍尖沙咀東部麼地道67號半島中心9樓

電話：2861 2767

圖文傳真：2865 6706

網址：<https://www.shew.com.hk>

電郵：shew@shunhinggroup.com

Office: 9/F, Peninsula Centre, 67 Mody Road, Tsimshatsui East, Kowloon, H.K.

Tel: 2861 2767

Fax: 2865 6706

Website: <https://www.shew.com.hk>

E-mail: shew@shunhinggroup.com

保養及維修 Maintenance and Repair Service:

信興電器服務中心有限公司

SHUN HING ELECTRIC SERVICE CENTRE LTD.

香港新界葵涌勝耀街2號信興中心11樓

電話：2406 5666

圖文傳真：2408 0316

網址：<http://www.shesc.com/zh>

11/F, Shun Hing Centre, 2 Shing Yiu Street, Kwai Chung, N.T. H.K.

Tel: 2406 5666

Fax: 2408 0316

Website: <http://www.shesc.com/en>

客戶服務中心

香港新界葵涌勝耀街2號信興中心1樓

九龍尖沙咀東部麼地道67號半島中心B座9樓

澳門慕拉士大馬路193-199號南嶺工業大廈5樓I座

Customer Service Centre

1/F, Shun Hing Centre, 2 Shing Yiu Street, Kwai Chung, N.T.

9/F, Block B, Peninsula Centre, 67 Mody Road, Tsim Sha Tsui East, Kowloon

Avenida de Venceslau de Morais, No. 193-199, 5 andar - 1, Edf. Industrial Nam Leng,

Macau

有關最新之香港及澳門客戶服務中心資料，請參閱信興服務中心網址：

<http://www.shesc.com/zh>

For the latest information of Hong Kong and Macau service center, please visit

<http://www.shesc.com/en>

RPP-J0126